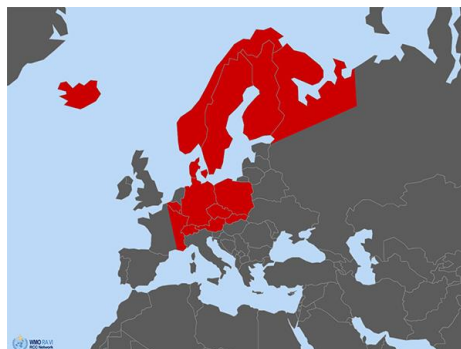


## Guidance on cold wave ID: 202120-i

**Area concerned:** Iceland, Norway, Sweden, Finland, northern European Russia, Denmark, eastern France, Belgium, Luxembourg, Germany, Switzerland, Austria, Czech Republic, Slovakia, Poland



Initial statement issued on 23 November 2021

Valid:

Begin: 23 November 2021

End: 7 December 2021

**To:** Climate Watch focal points of NMHS of Iceland, Norway, Sweden, Finland, Russia, Denmark, France, Belgium, Luxembourg, Germany, Switzerland, Austria, Czech Republic, Slovakia, Poland

The RA VI RCC Network Offenbach Node on Climate Monitoring (RCC Node-CM) is responsible for providing Climate Watch guidance information for NMHSs' own consideration for issuing climate advisories for their territory.

After having consulted the consortium partners of the RCC Node-CM and RCC Node-LRF (RA VI RCC Network Toulouse and Moscow Node on Long-Range Forecasting), RCC Node-CM issues the following guidance information:

**Due to the results from monthly forecasts, we expect:**

**"Below-normal temperature (cold wave) in Northern and Central Europe in the next two weeks with widespread frost, in middle latitudes temporary. Weekly anomalies will be mostly -1 to -3°C in middle latitudes, -3 to -8°C in higher latitudes. Daily minima can be below -25°C in higher latitudes, and partly below -5°C in middle latitudes. Probabilities are above 90% for the first week, 60-90% for the second week. There is an increased risk of frost damage."**

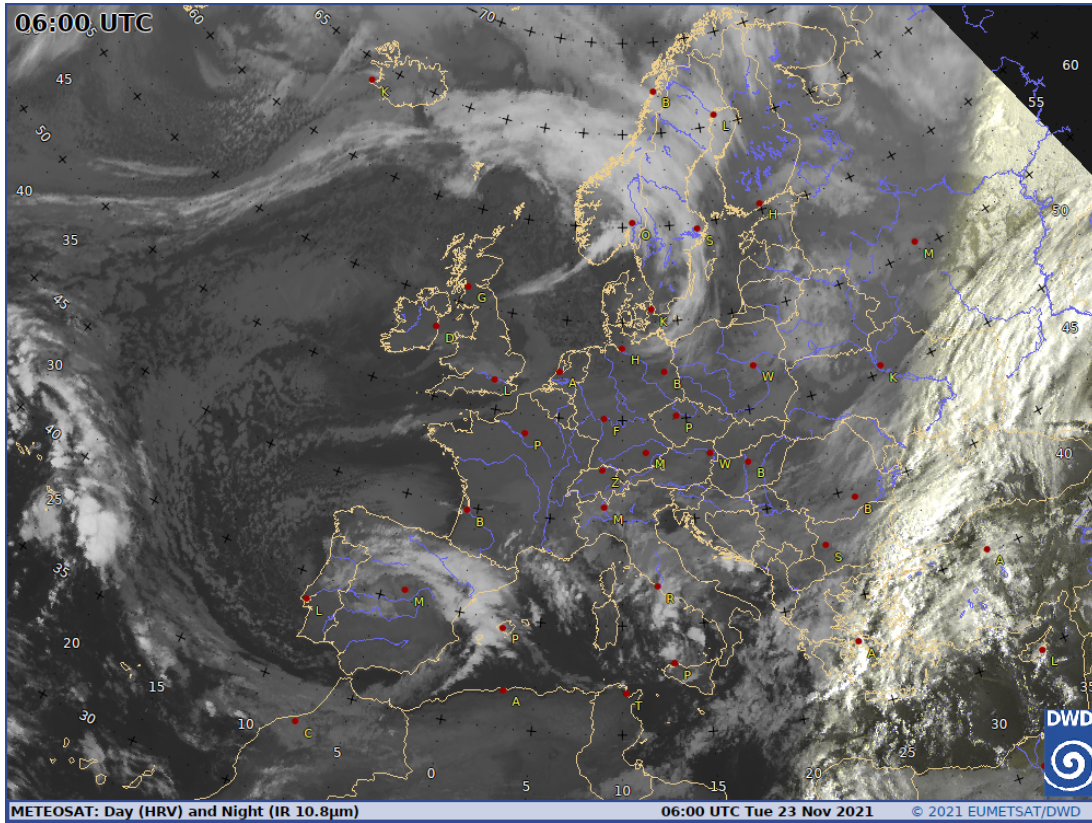
This information should be used as guidance for the National Meteorological and Hydrological Services (NMHS) in a pre-operational mode. It is up to the above-mentioned NMHSs to monitor the status and evolution of the current climate conditions closely and to consider issuing a national Climate Watch Advisory. RCC Node-CM would appreciate feedback from NMHS whether this information was helpful. Also, any suggestion on further pieces of information needed by NMHSs is highly welcomed! A template for a national climate watch advisory can be provided by DWD on request as agreed among the climate watch pilots and RCC Node-CM.

Please note that further information can be obtained from RCC Node-CM website (<https://rcccm.dwd.de>) concerning Climate Monitoring and from RCC Node-LRF websites (<http://seasonal.meteo.fr>, <http://neacc.meteoinfo.ru/forecast>) concerning Long-Range Forecast or by e-mail to [rcc.cm@dwd.de](mailto:rcc.cm@dwd.de) or [rcc-lrf-mf@meteo.fr](mailto:rcc-lrf-mf@meteo.fr). For ECMWF member's further information on monthly forecasts after logging in is provided at <http://www.ecmwf.int/> ->Forecasts

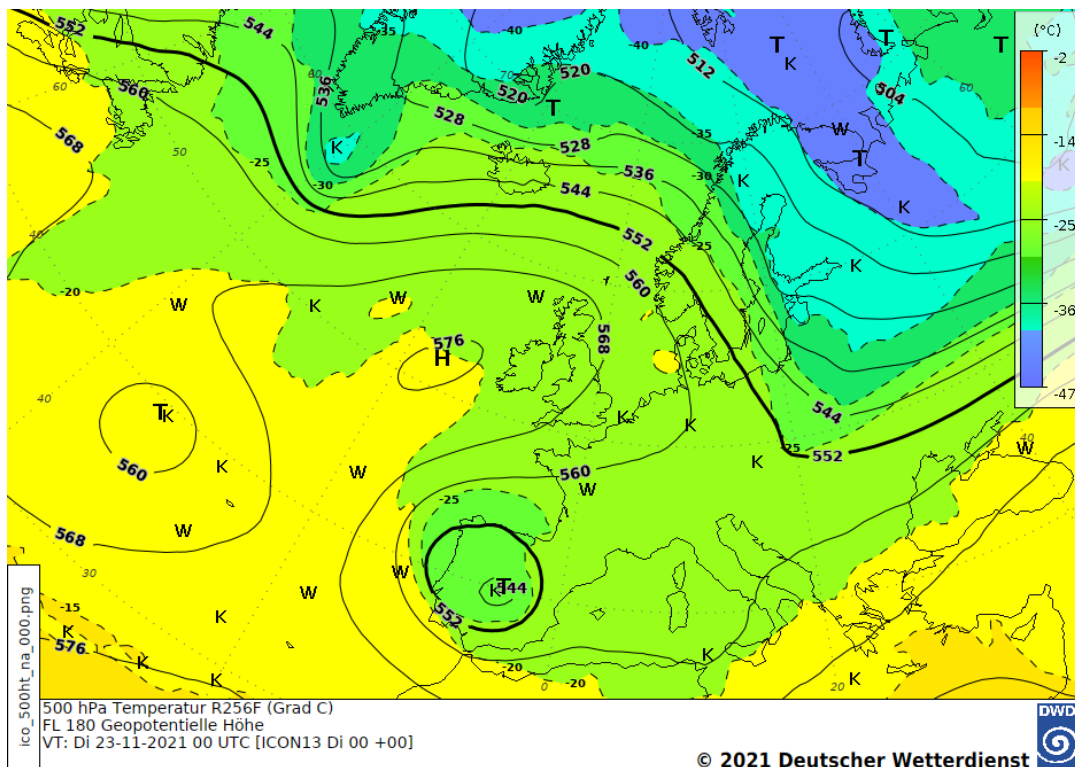
We will monitor the evolution of the anomaly, issue updates if significant change arise and close the advice when no clear signal can be detected in the forecasts.

On behalf of the RCC Node-CM Team

## Supplementary material

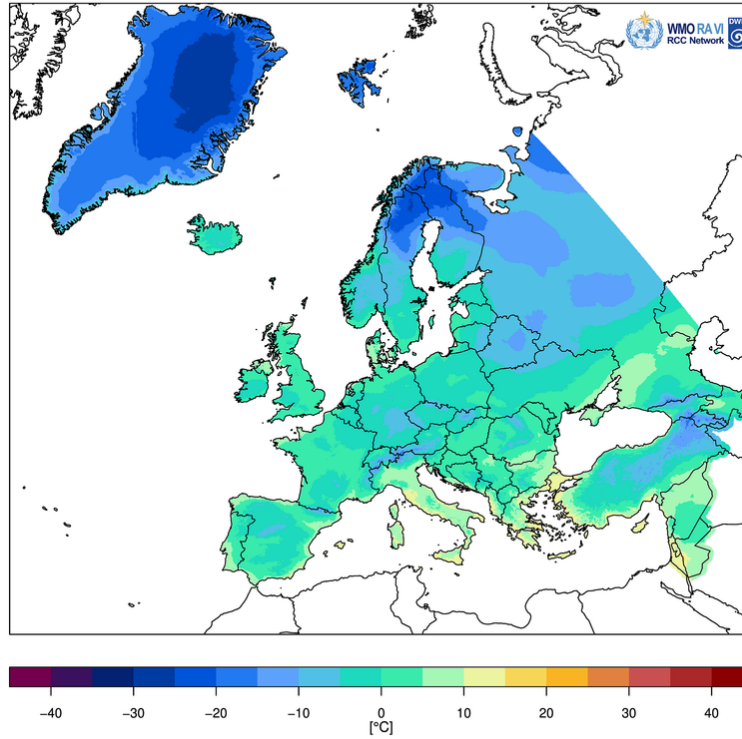


Meteosat satellite image 23 November 2021, 06 UTC. Source: DWD

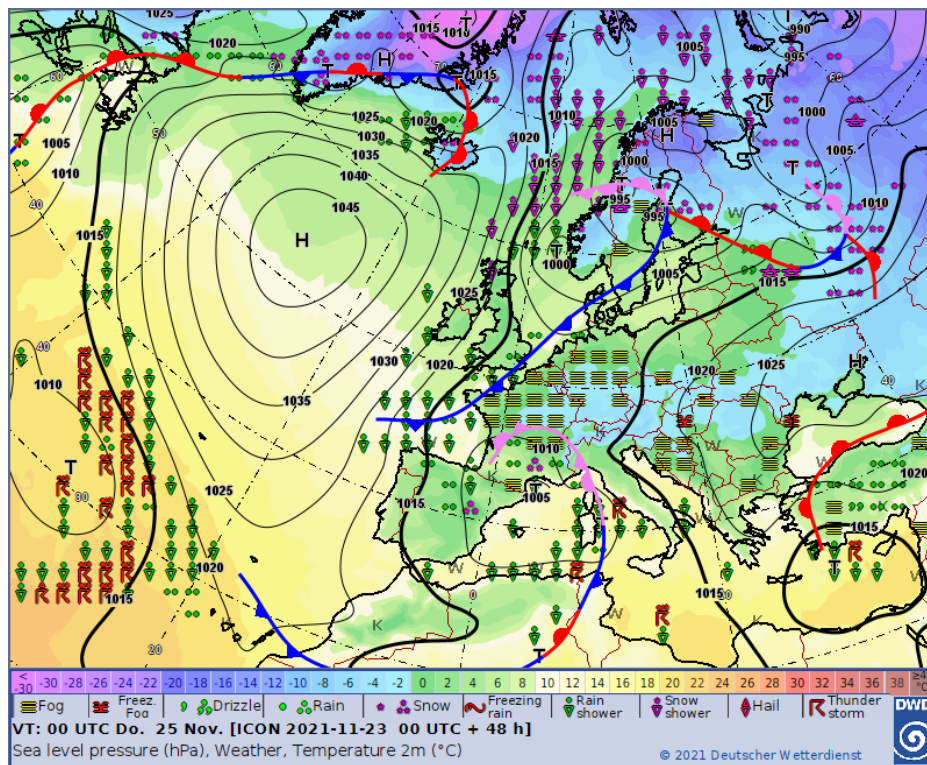


500-hPa chart, 23 November 2021, 00 UTC. Source: DWD

Tägliche Minimumtemperatur: 23. November 2021 (Europa)  
Daily Minimum Temperature: 23 November 2021 (Europe)



Map of daily minimum temperature on 23 November 2021, Source: DWD



Forecast chart for 25 November 2021, 00 UTC, Source: DWD,  
[https://www.dwd.de/EN/ourservices/hobbymet\\_wcharts\\_europe/hobbyeuropecharts.html](https://www.dwd.de/EN/ourservices/hobbymet_wcharts_europe/hobbyeuropecharts.html)